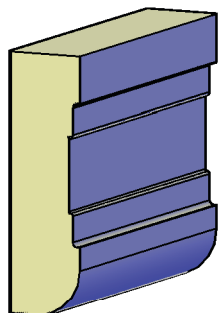


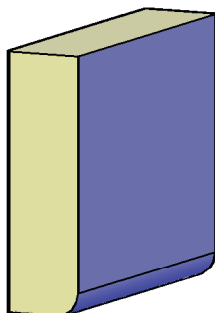
Pressform Mouldings



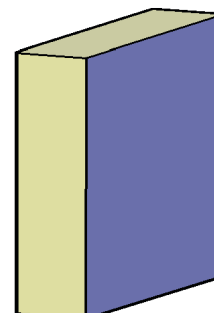
Sternwood



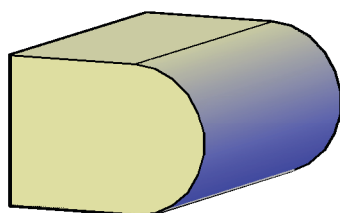
Standard Lightshield
2400x55x16mm



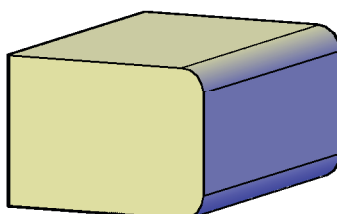
EP6 Lightshield
5mm Radius



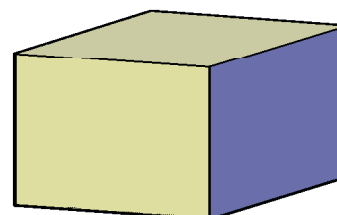
EP9 Lightshield
Square Edge



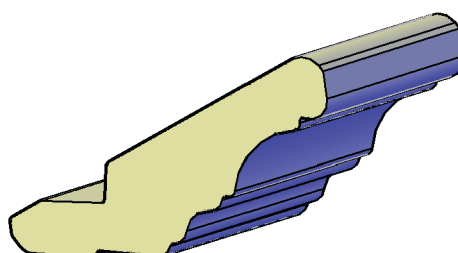
Bullnose Capping
2400x45x32mm



EP6 Capping
5mm Radius



EP9 Capping
Square Edge



Standard Capping
2400x75x45mm

Sternwood Products (Pty) Ltd

1 Chevrolet Street, Markman Industrial, Port Elizabeth, 6056
PO Box 2451, North End, Port Elizabeth, 6056
Tel.: 041 461 1404 Fax: 041 461 1269
E-mail: anne@sternwood.com
Website: www.sternwood.com